

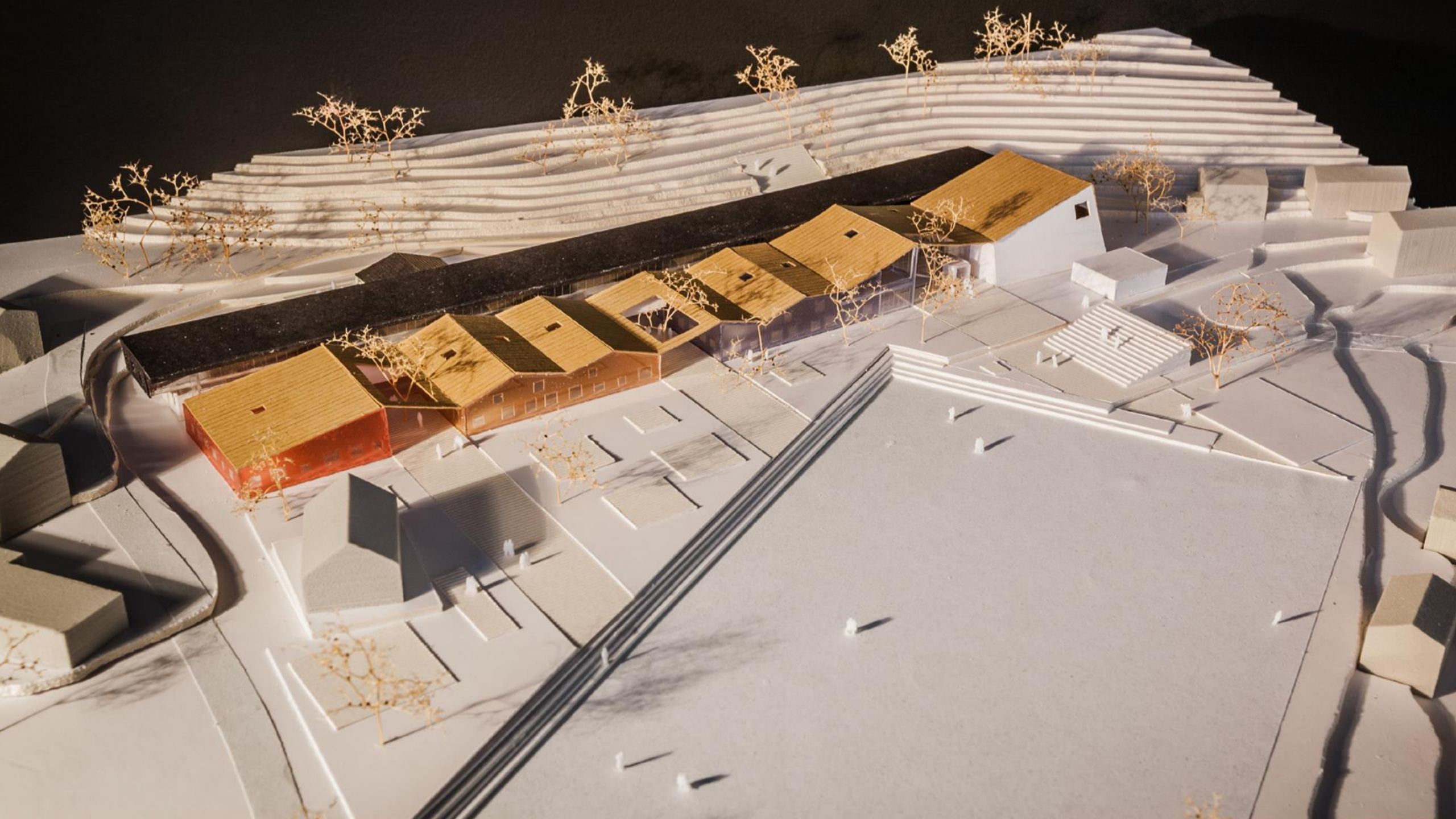


BÅTSFIJORD SKOLE

STORSTUA i Båtsfjord
Oktober 2018

IDENTITET – ESSENSEN AV BÅTSFJORD



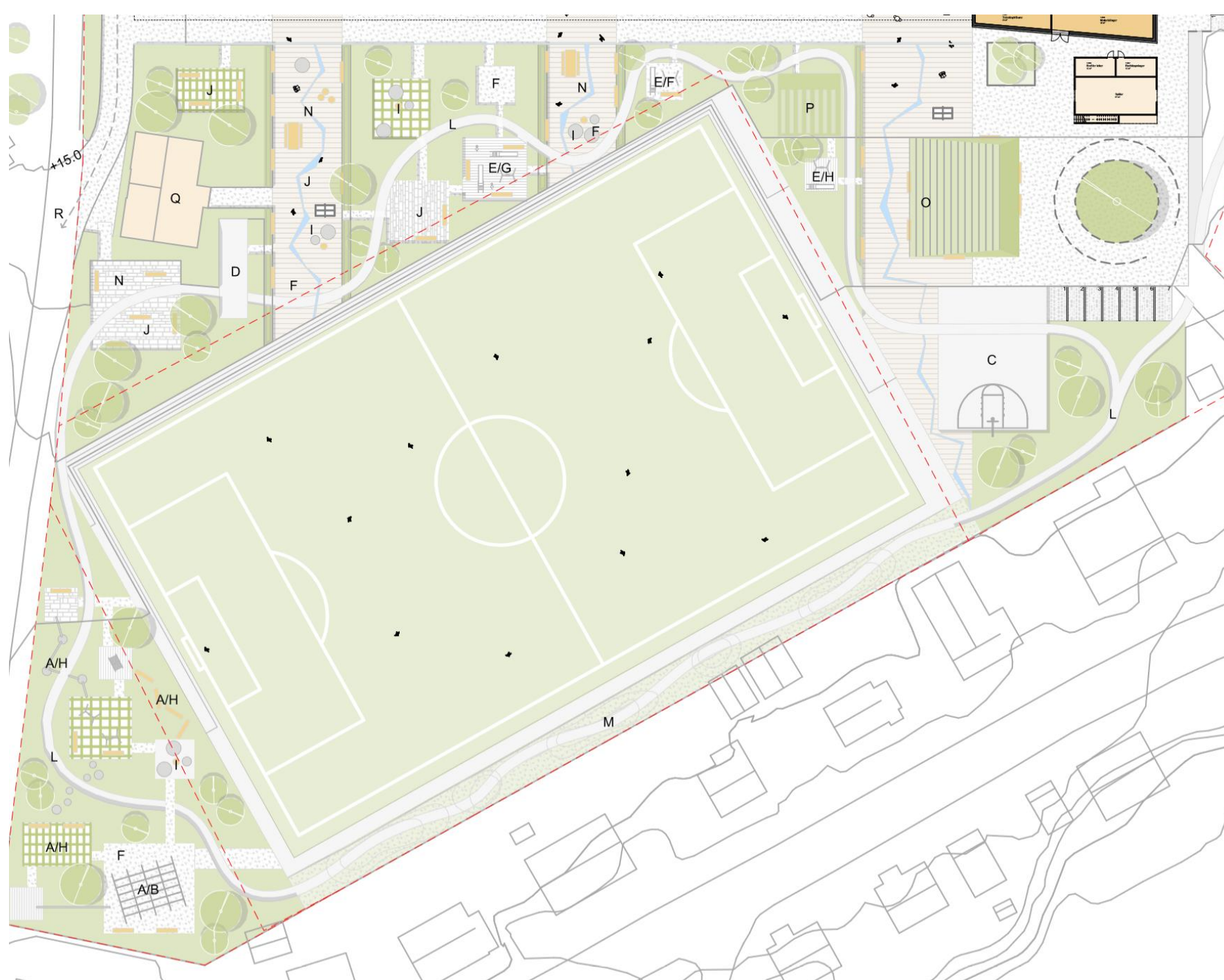




SITUASJONSPLAN 1:1000



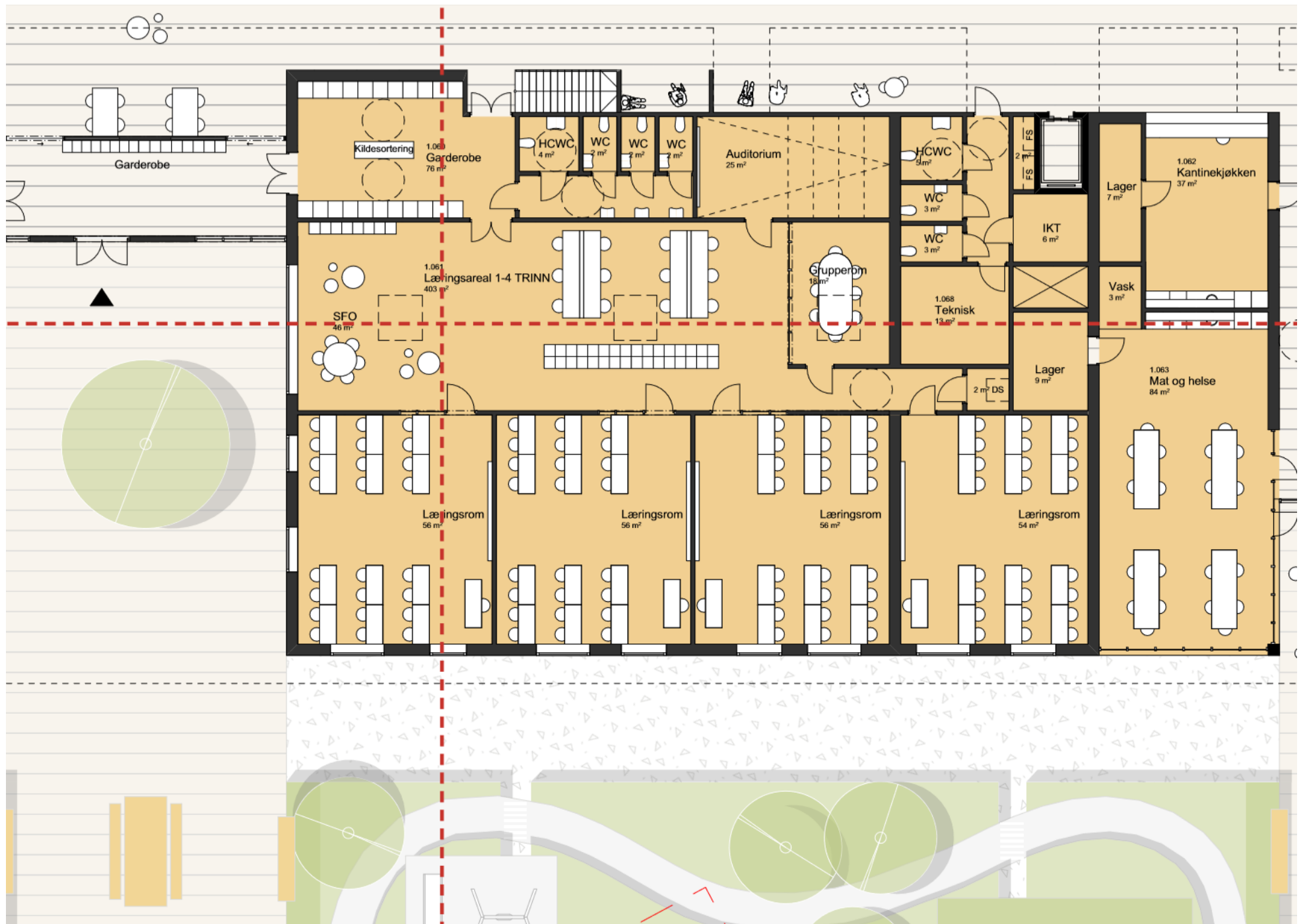
- A** Hinderløype
- B** Klatrenett
- C** Basketball
- D** Skaterampe
- E** Sklier
- F** Sandkasser
- G** Lekeapparater
- H** Balanseapparater
- I** Trampoliner
- J** Bordtennis / Sjakk
- K** Akebakke
- L** Skiløype / SFO-Sykkelvei
- M** Sykkel / Skicross
- N** Sitteplasser
- O** Amfi
- P** Hage
- Q** Klubbhus
- R** Kiss and ride





TRINNAREALENE - GRUNNSKOLEN

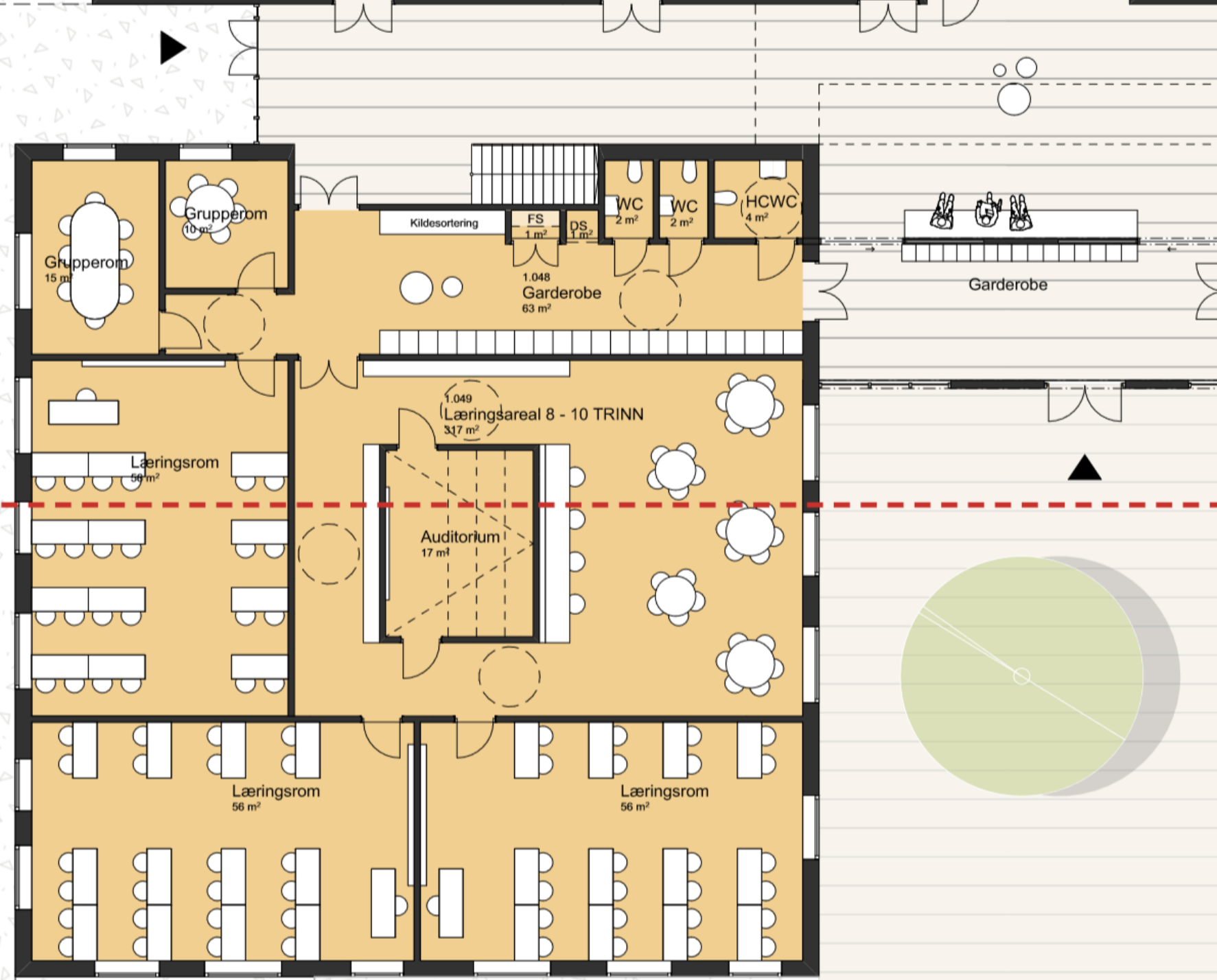






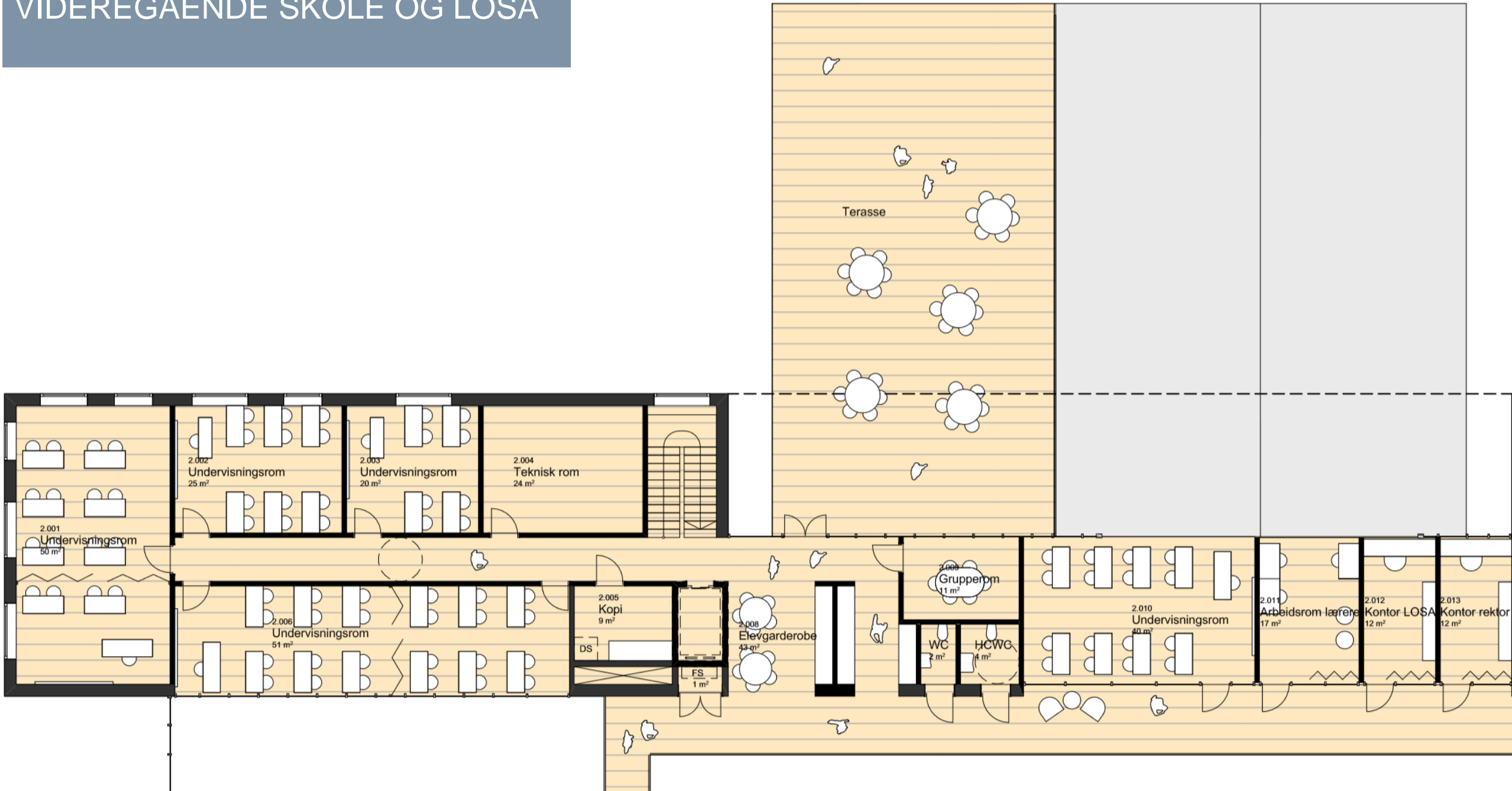
5. - 7.
TRINN





8. - 10.
TRINN

VIDEREGÅENDE SKOLE OG LOSA

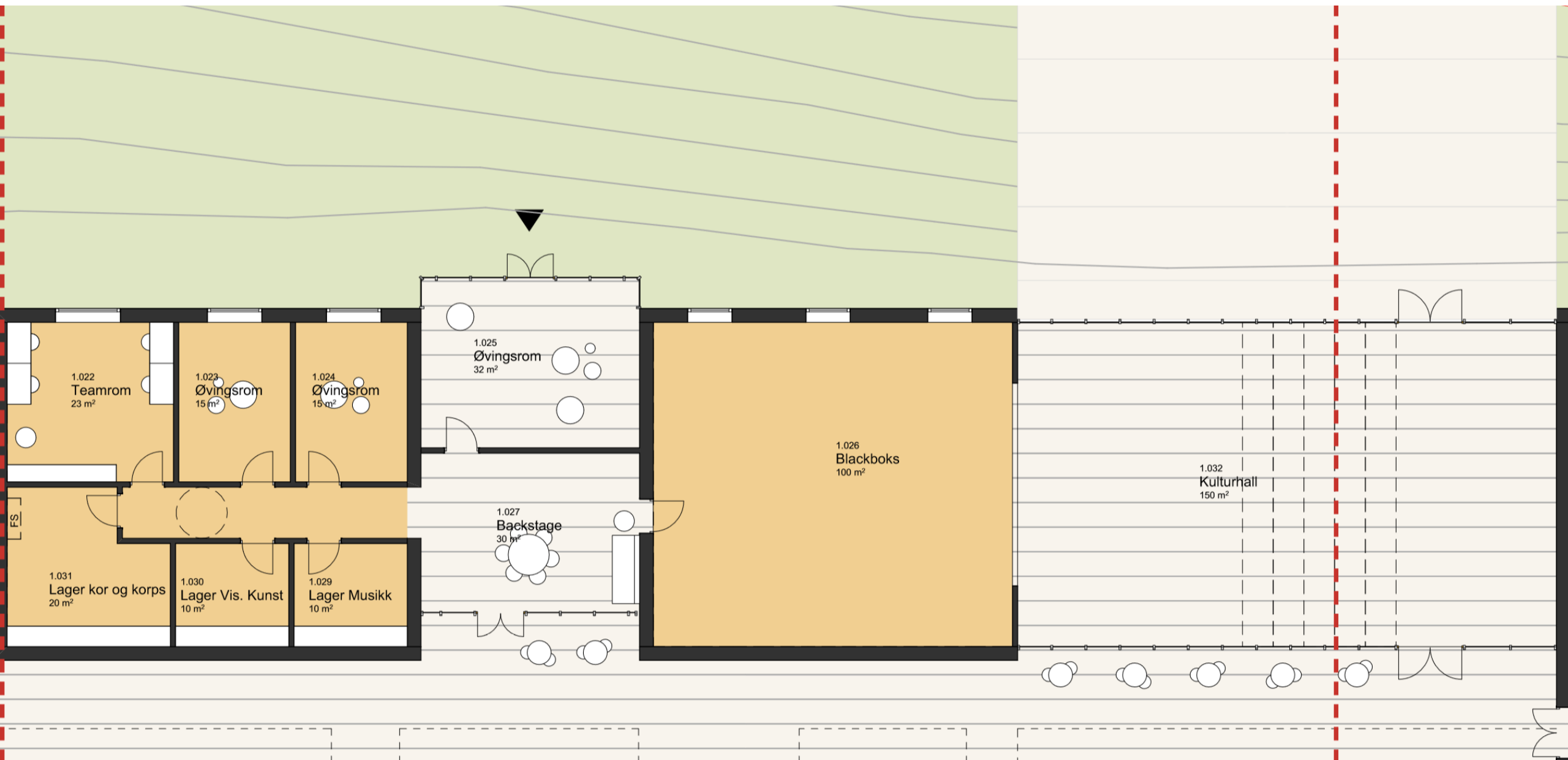


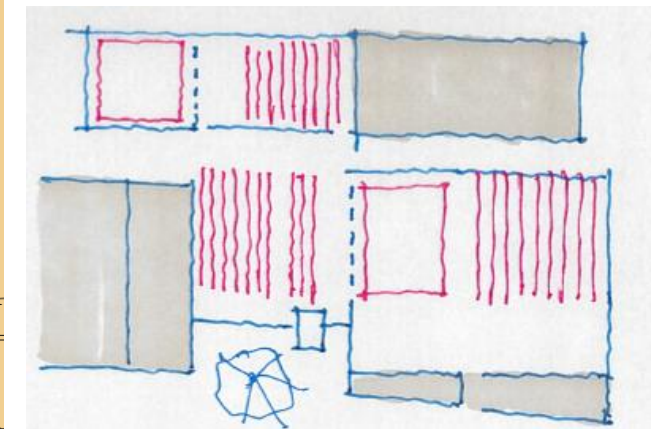
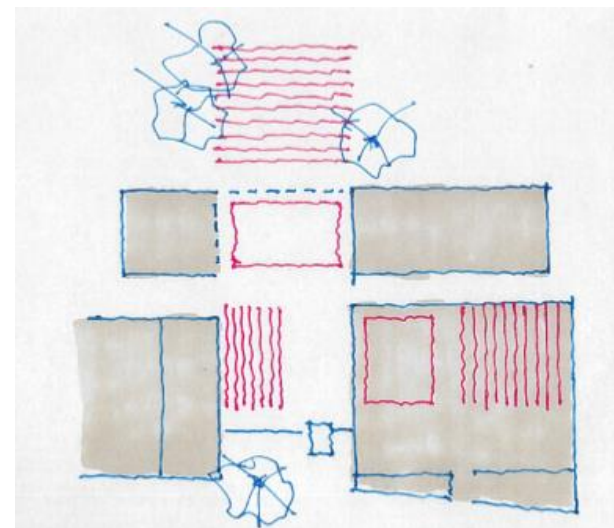
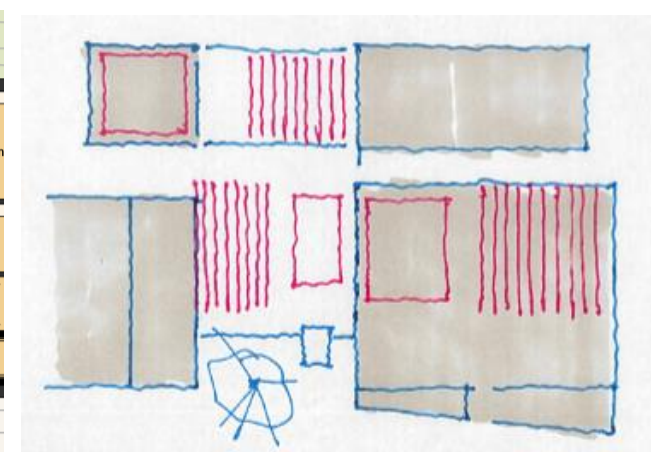
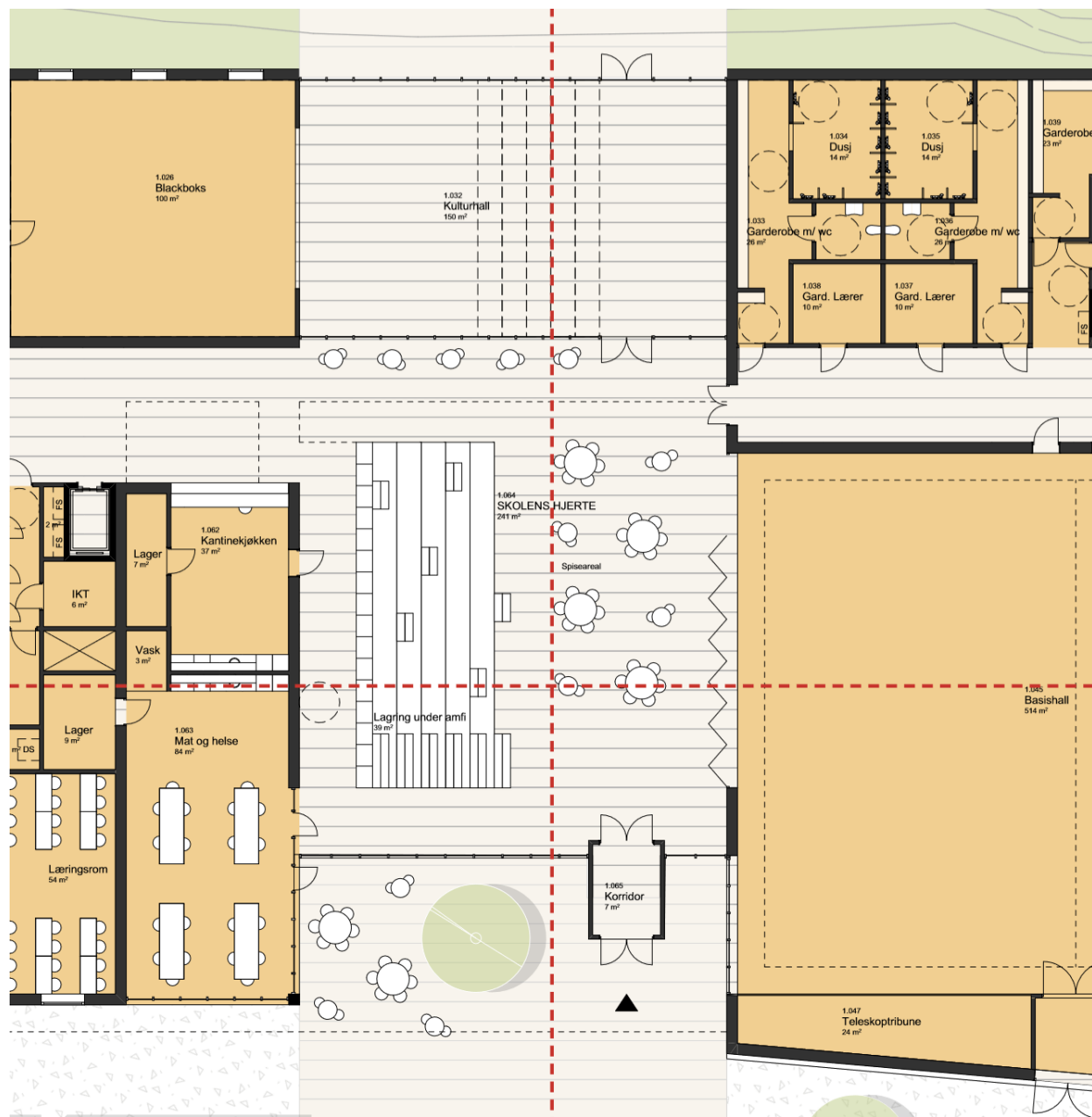
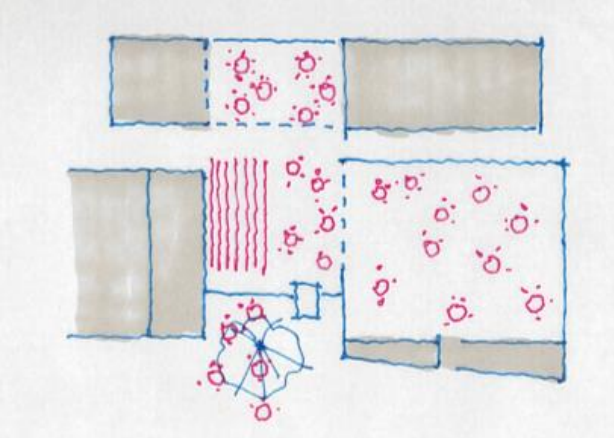


SKOLENS
HJERTE

wsp

KULTURAREALER

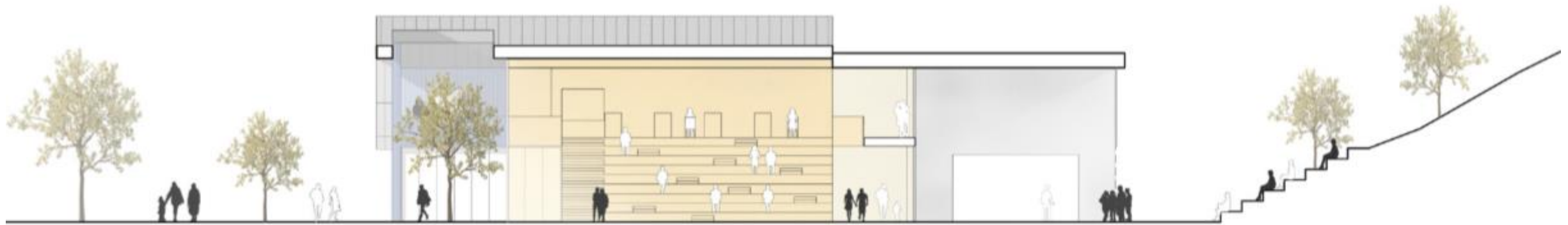


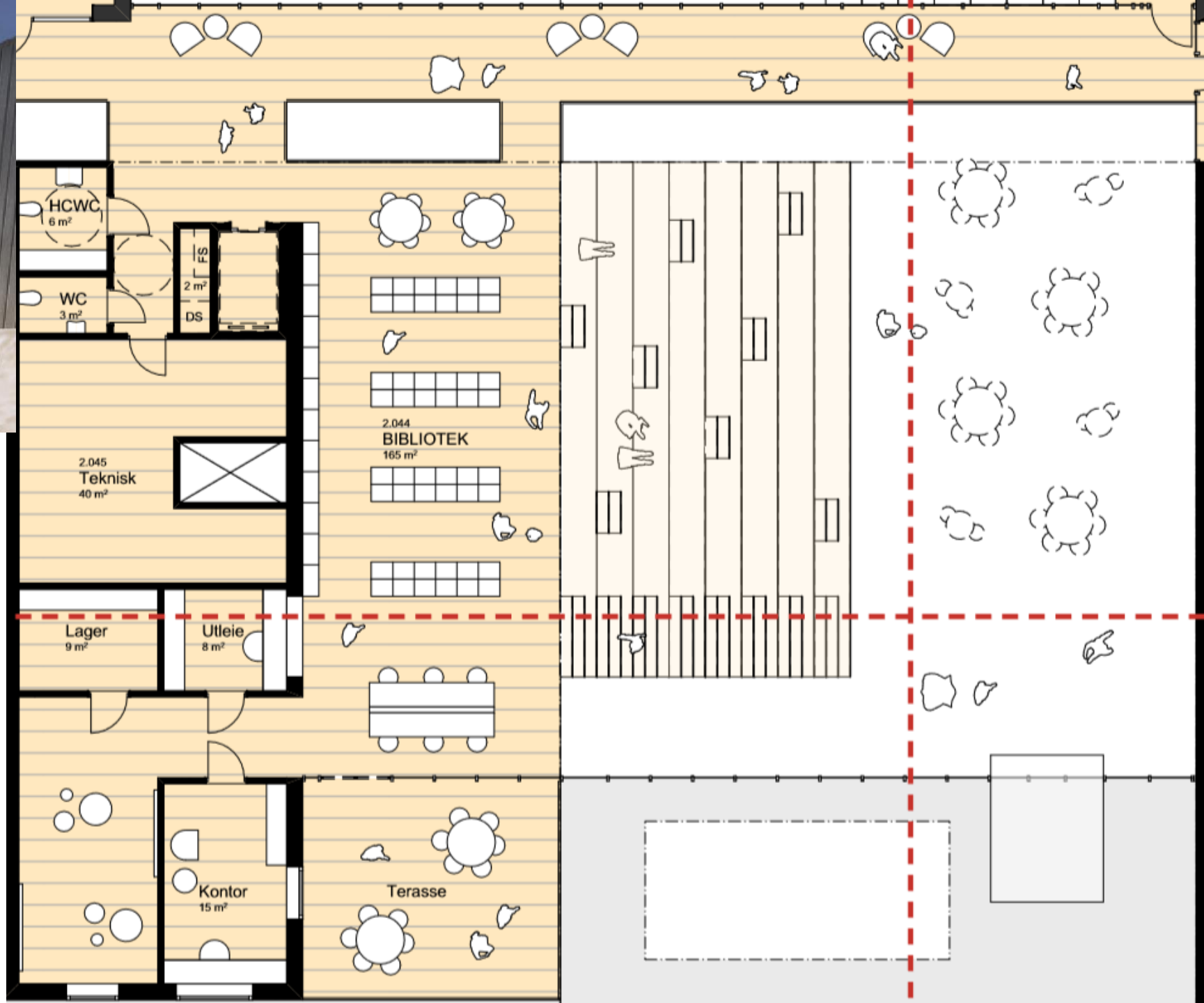


GLASSGATEN

wsp



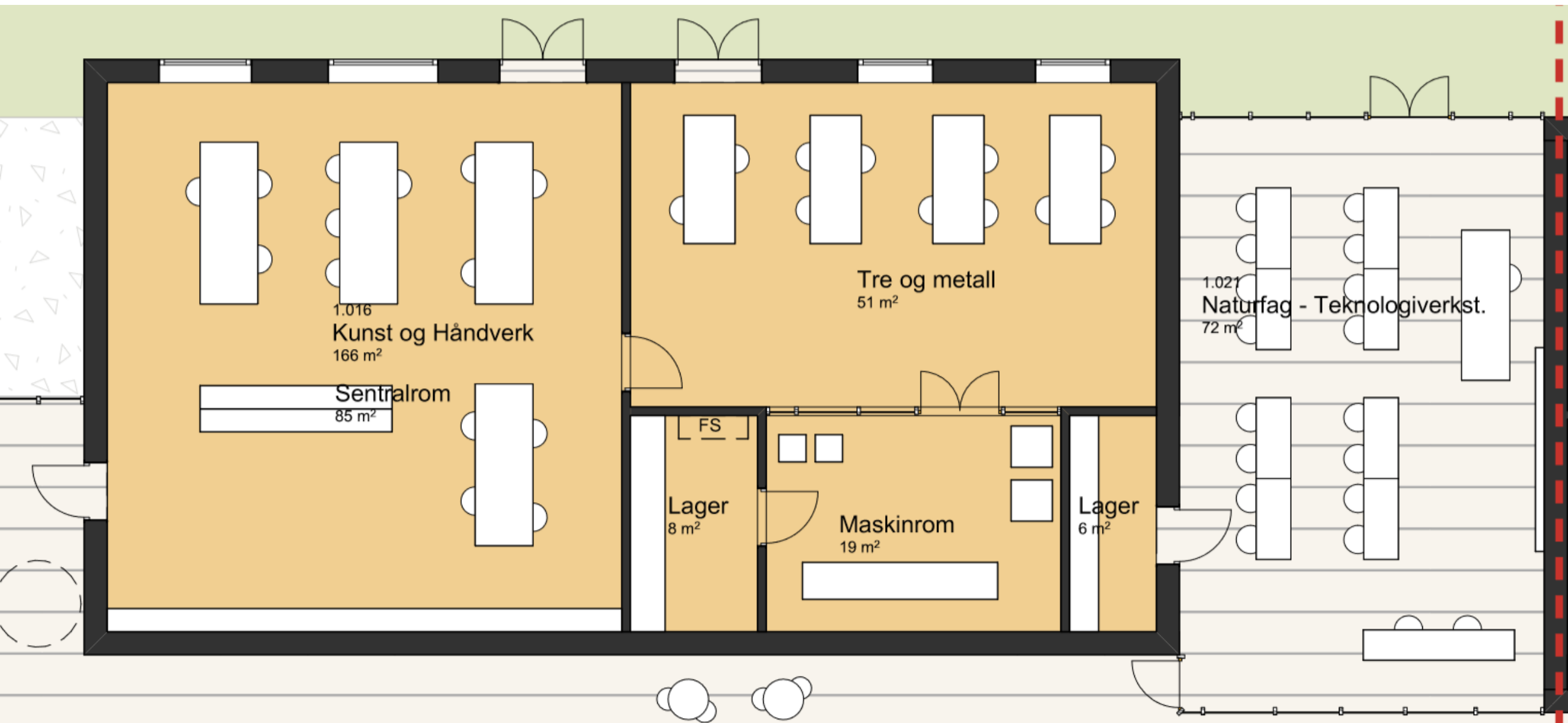




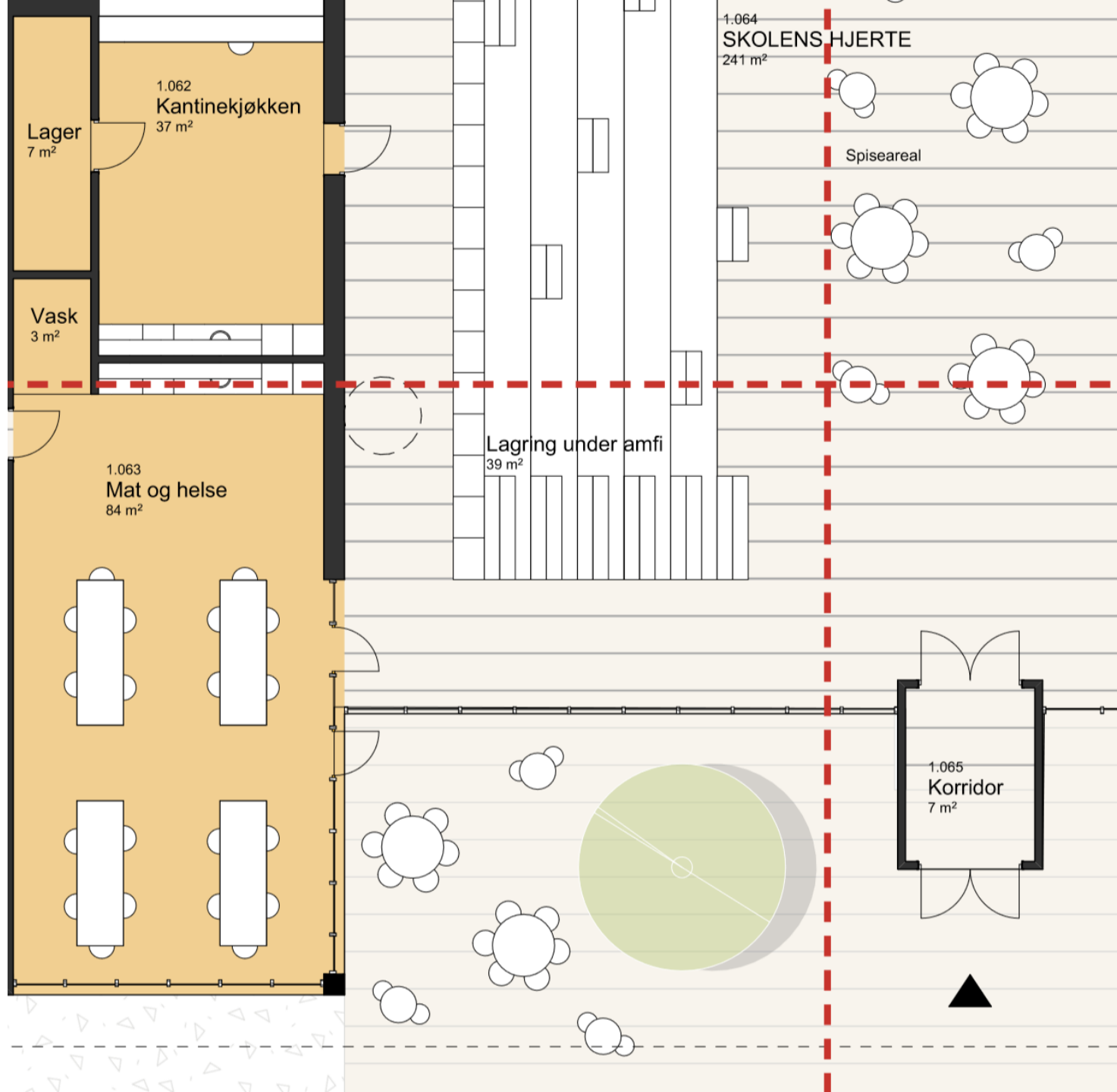
BIBLIOTEKET



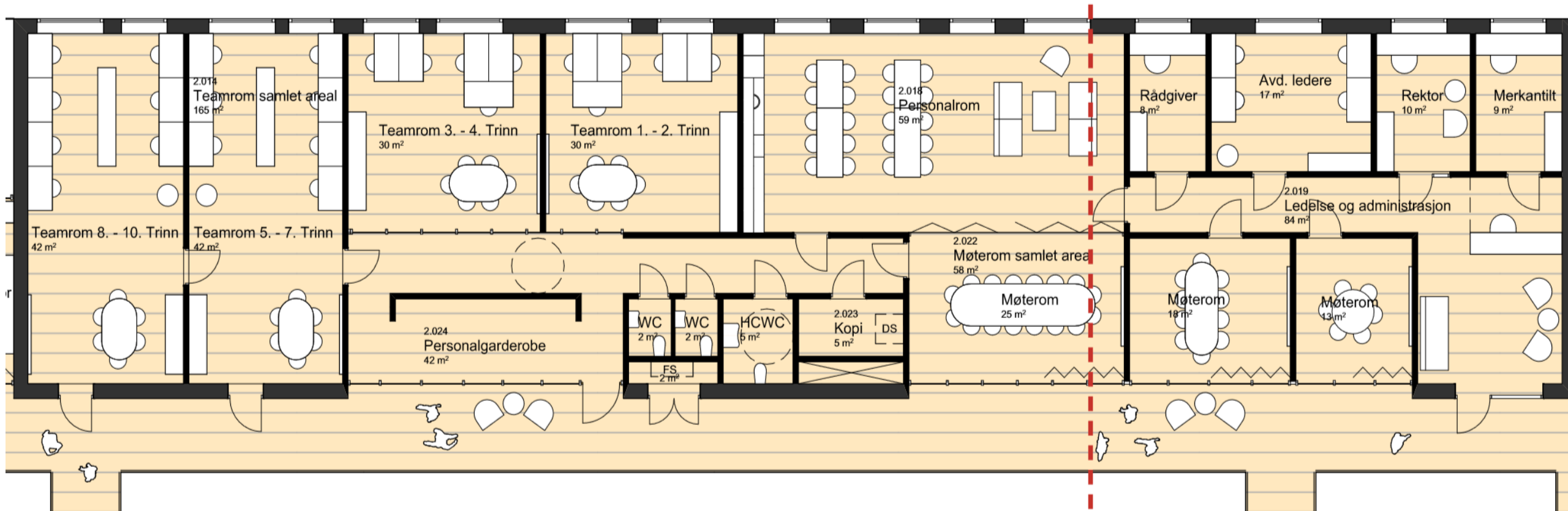
KUNST & HÅNDVERK + NATURFAG



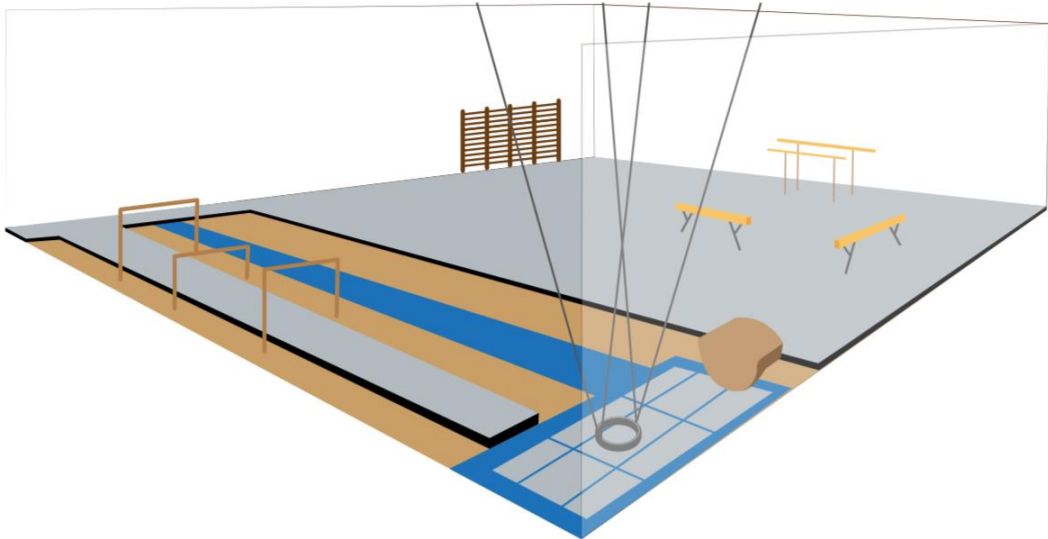
KANTINEKJØKKEN +
MAT OG HELSE



SKOLENS ADMINISTRASJON



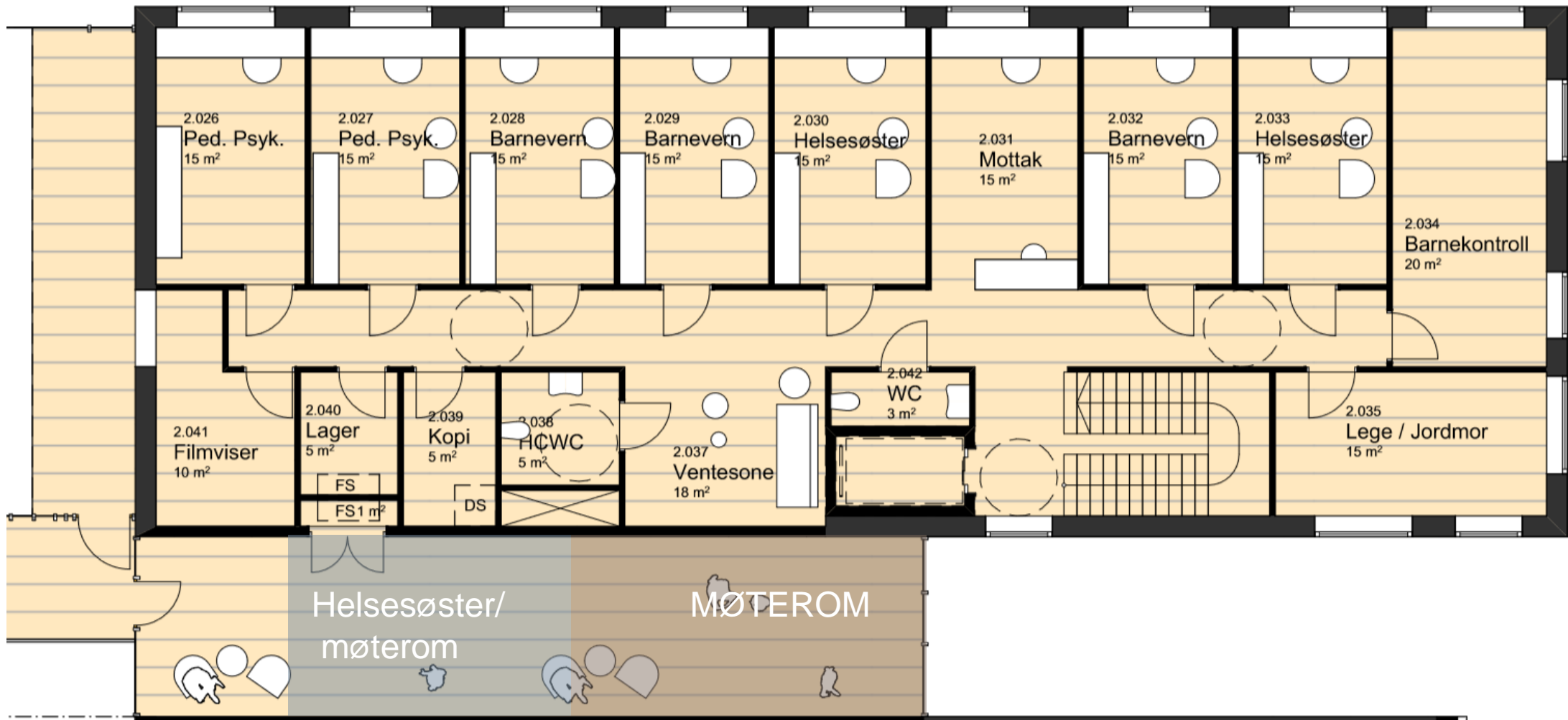
BASISHALL



SVØMMEHALL



HELSETJENESTER



FASADER

FASADE SØR 1:500



FASADE NORD 1:500



FASADE VEST 1:500



FASADE ØST 1:500

